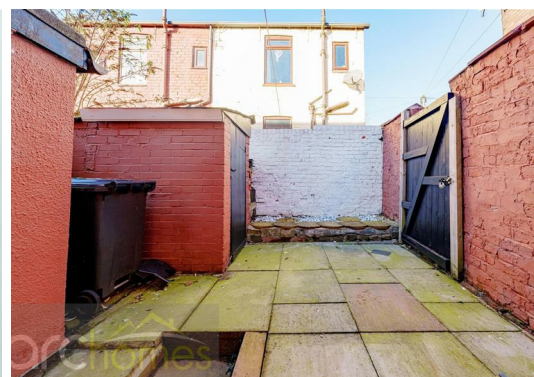




29 Shakerley Road, Tyldesley, M29 8ER

Offers over £120,000

ARC HOMES are delighted to offer FOR SALE this excellent end terraced property positioned within a popular spot and is offered with no onward chain. This lovely home is well presented and would suit a range buyers. Entry is via an entrance vestibule which leads into the well proportioned sitting room. To the rear sits the modern kitchen dining room and a rear hallway with ample storage. To the first floor are two generous bedrooms and a modern bathroom. Outside is an enclosed low maintenance rear garden.



Energy Efficiency Rating		
	Current	Potential
Very energy efficient - lower running costs		
(92 plus) A		
(81-91) B		
(69-80) C		
(55-68) D		
(39-54) E		
(21-38) F		
(1-20) G		
Not energy efficient - higher running costs		
England & Wales		EU Directive 2002/91/EC 

Environmental Impact (CO ₂) Rating		
	Current	Potential
Very environmentally friendly - lower CO2 emissions		
(92 plus) A		
(81-91) B		
(69-80) C		
(55-68) D		
(39-54) E		
(21-38) F		
(1-20) G		
Not environmentally friendly - higher CO2 emissions		
England & Wales		EU Directive 2002/91/EC 



30 Bolton Old Road, Atherton, M46 9DL

T. 01942 363599
info@arc-homes.net

